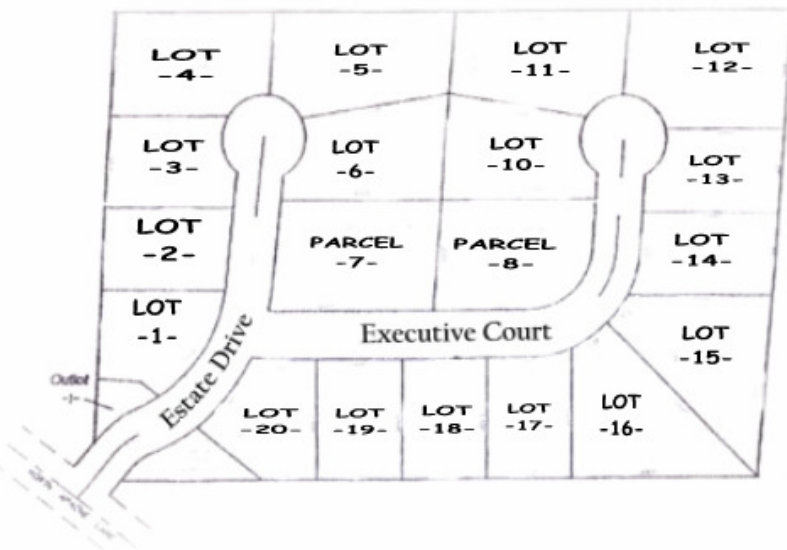


# EDGEWOOD ESTATES



Near DC Everest schools, shopping, new YMCA, and just minutes from St. Clare's Hospital and surrounding medical facilities. Public sewer & water, curb & gutter, paved cul-de-sac streets, in one of Weston's finest upscale residential areas. Walkout and daylight window sites available. Lots sized about 1/2 to 3/4+ acre. Quiet setting w/ covenants and restrictions will ensure a truly exclusive neighborhood!



- LOT 1 **\$57,900** (20,468 sq. ft)
- LOT 2 **\$64,900** (21,951 sq. ft)
- LOT 4 **\$69,900** (31,574 sq. ft)
- Parcel 7 **\$69,900** (36,761 sq. ft)
- Parcel 8 **\$69,900** (33,526 sq. ft)
- LOT 10 **\$65,900** (27,143 sq. ft)
- LOT 11 **\$66,500** (32,357 sq. ft)
- LOT 12 **\$68,500** (36,584 sq. ft)
- LOT 13 **\$59,900** (22,031 sq. ft)
- LOT 14 **\$59,900** (23,679 sq. ft)
- LOT 15 **\$67,900** (33,771 sq. ft)
- LOT 16 **\$67,900** (33,469 sq. ft)
- LOT 18 **\$64,900** (20,462 sq. ft)
- LOT 19 **\$64,900** (20,458 sq. ft)
- LOT 20 **\$59,500** (21,824 sq. ft)



**YVONNE M. PREY**  
**715-571-7653**  
**sold@yvonne.com**



**Rick**  
**Wanta**  
**Builders, Inc.**